



**ALASKA DIVISION OF HOMELAND SECURITY & EMERGENCY MANAGEMENT**

**SITUATION REPORT 18-340 • DECEMBER 06, 2018**



Toll Free 1.800.478.2337

Anchorage Area 907.428.7000

SEOC 907.428.7100

<p><b><u>SEOC Preparedness Level</u></b> Level 3 – Normal Operations</p>	<p><a href="http://ready.alaska.gov">http://ready.alaska.gov</a></p>	<p><b><u>National Terrorism Advisory System:</u></b> View this site for the latest NTAS bulletin: <a href="#">You can read the new NTAS Bulletin here.</a></p>
<p><b><u>Maritime Security (MARSEC)</u></b> Level:1-Significant Risk</p>	<p><b><u>WHO Post Pandemic:</u></b> Disease activity at seasonal levels.</p>	<p><b><u>Alaska Military Installation Force Protection Level:</u></b> FPCON Bravo</p>

(Significant changes from previous situation reports are in red.)

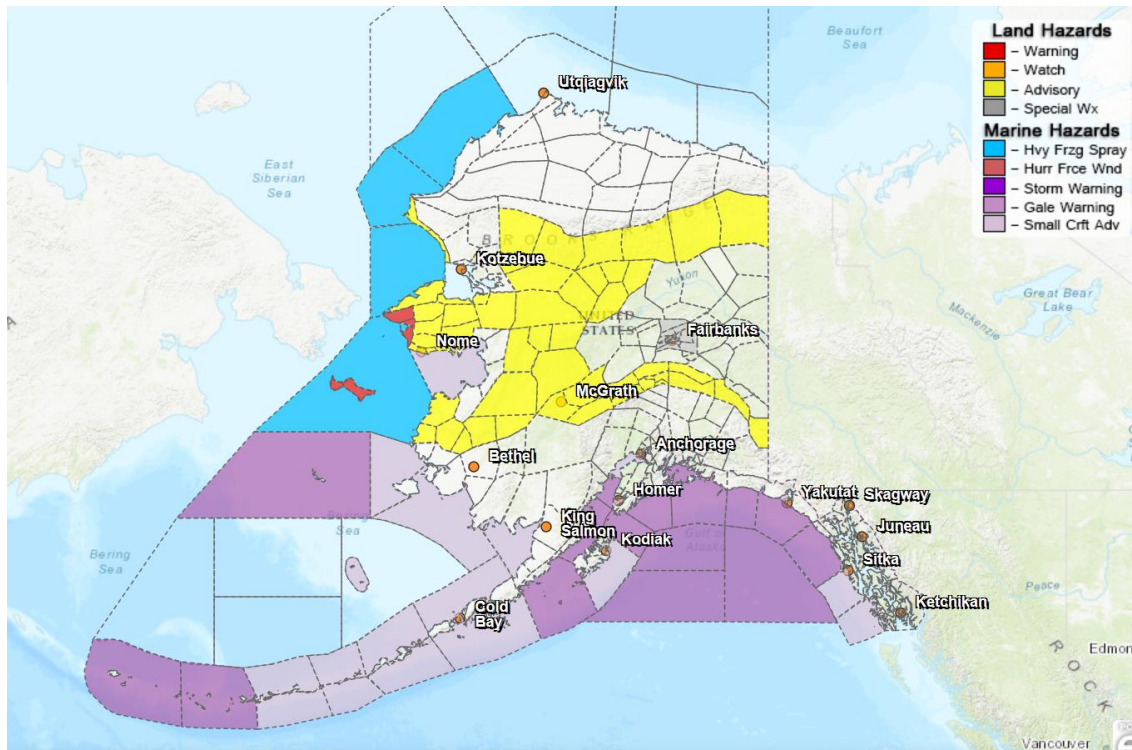
**THREAT LEVEL CHANGES**

NONE

**DHS&EM OPERATIONS**

The SEOC continues to be activated to Level 3 in response to the M7.0 earthquake affecting the Municipality of Anchorage, Matanuska-Susitna Borough, and Kenai Peninsula Borough last Friday. DHS&EM has integrated with FEMA to provide joint management of the earthquake response and recovery. Joint FEMA/State/local government preliminary damage assessments are being planned for next week.

**Significant Weather**



A winter storm warning is in effect for the St. Lawrence Island and Bering Sea Coast through Friday morning. The rest of the Seward Peninsula and western Interior regions are under a winter storm

advisory through tomorrow evening. watch through Thursday afternoon. A winter weather advisory is in effect for the northern slopes of the Alaska Range through tomorrow morning.

Follow these links for the most current [watches / warnings / advisories](#), <http://www.weather.gov/arh/>

### **Avalanche Forecast:**

Avalanche Advisories: Moderate for Chilkat Pass above 2,500 feet elevation through Thursday.

Follow this link for the most current information: <https://alaskasnow.org/>

### **Air Quality Index (AQI) Advisories**

Active advisories/episodes are in effect for Central and Eastern Interior.

<http://dec.alaska.gov/Applications/Air/airtoolsweb/Advisories/Index>

### **State of Alaska Department of Health and Social Services (DHSS)**

The Alaska DHSS website is located at <http://dhss.alaska.gov/Pages/default.aspx>

### **Spills of Oil and Hazardous Substances**

The ADEC Spill Prevention and Response page is located at

<http://dec.alaska.gov/spar/ppr/spill-information/response/>

### **Recent Earthquakes**

USGS Earthquake Information: <http://earthquake.usgs.gov/>

National Tsunami Warning Center: <http://ntwc.arh.noaa.gov/>

### **Travel Advisory**

For current driving conditions dial 511 or link to <http://511.alaska.gov/>

### **Alaska Volcanoes**

**Semisopchnoi** Alert Level: Watch and Aviation Color Code: Yellow

**Veniaminof** Alert Level: Watch and Aviation Color Code: Orange

**Cleveland** Alert Level: Advisory and Aviation Color Code: Yellow

**Great Sitkin** Alert Level: Advisory and Aviation Color Code: Yellow

For Alaska Volcano updates, go to: <https://www.avo.alaska.edu/>

### **Alaska Cyber Security Information**

State Employees may sign up for cyber security notifications and alerts at

<https://oit.alaska.gov/Security>

**The Next Situation Report:** will be **07** December 2018 at 8:00 am. A significant change in the situation or the threat level will prompt an interim report.

This report is posted on the internet at <https://ready.alaska.gov/sitrep>. To register for email distribution, go to <http://list.state.ak.us/mailman/listinfo/dhsem.situation.report>. Direct questions regarding this report to the SEOC at 907-428-7100 or [seoc@alaska.gov](mailto:seoc@alaska.gov).