



**ALASKA DIVISION OF HOMELAND SECURITY &
EMERGENCY MANAGEMENT**

SITUATION REPORT 19-064 • MARCH 05 2019



Toll Free 1.800.478.2337

Anchorage Area 907.428.7000

SEOC 907.428.7100

<u>SEOC Preparedness Level</u> Level 3 – SEOC Activated	http://ready.alaska.gov	<u>National Terrorism Advisory System:</u> View this site for the latest NTAS bulletin: You can read the new NTAS Bulletin here.
<u>Maritime Security (MARSEC)</u> Level: 1-Significant Risk	<u>WHO Post Pandemic:</u> Disease activity at seasonal levels.	<u>Alaska Military Installation Force Protection Level:</u> FPCON Bravo

(Significant changes from previous situation reports are in red.)

THREAT LEVEL CHANGES : NONE

DHS&EM OPERATIONS

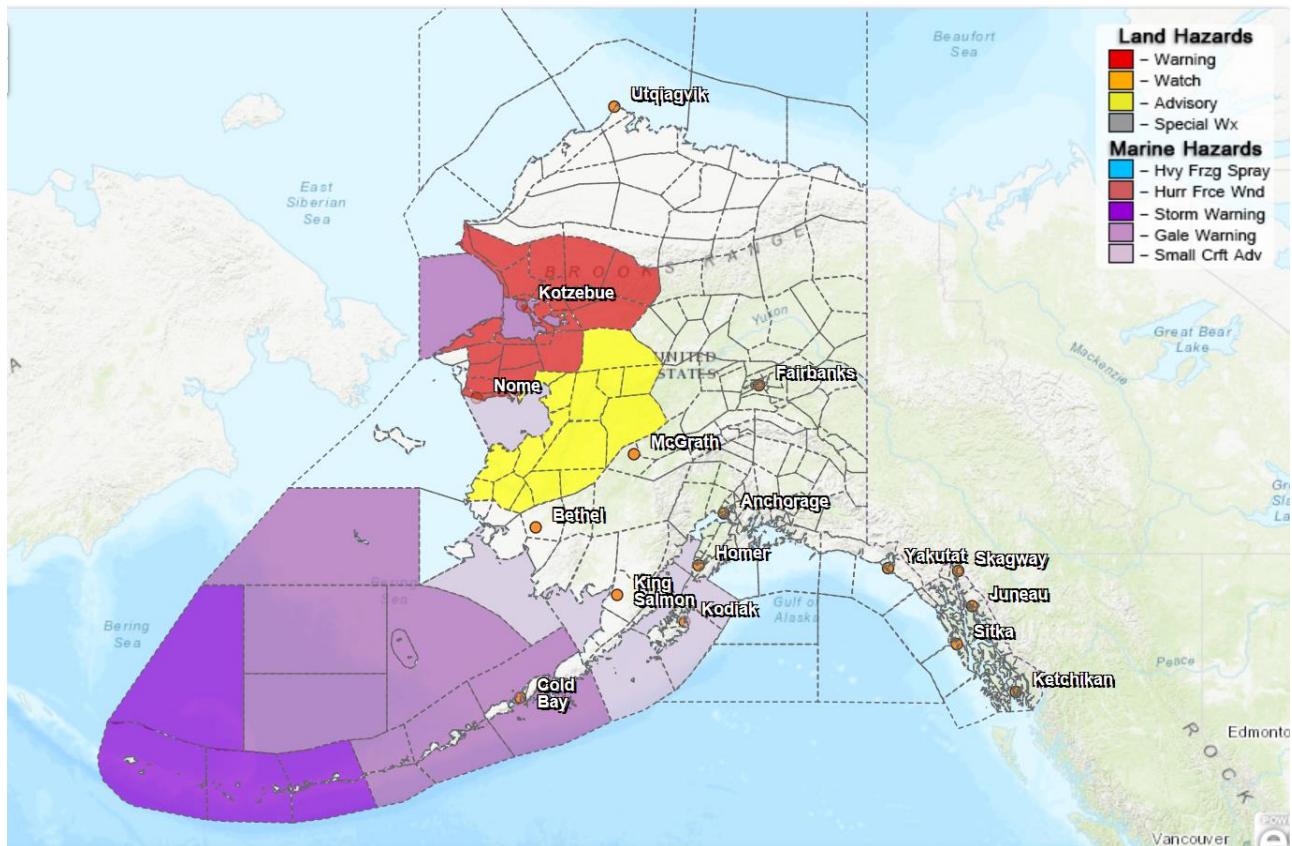
Cook Inlet Earthquake (FEMA Declaration 4413-DR)

The SEOC remains activated to Level 3. It has been 90 days since the earthquake. FEMA disaster survivor assistance (DSA) teams continue to work with local government officials in all three affected jurisdictions. The State has received over 14,500 applications for disaster assistance and field-verified the damage in over 1900 of these applications. FEMA has opened a total of four Disaster Recovery Centers in Anchorage, Eagle River, and Wasilla.

State & FEMA Response Activity

Individual Assistance (IA)	<i>All data is as of close of business (COB) prior duty day</i>
State Registrations	14,594
FEMA Registrations	5,152
SBA Loans Approved	145
Public Assistance Applicants	85

Significant Weather



the Winter Storm Warning remains in effect until 3 pm akst Wednesday for the Lower Kobuk and Noatak Valleys, Northern and Interior Seward Peninsula, Upper Kobuk and Noatak Valleys, Southern Seward Peninsula Coast, Chukchi Sea coast.

A Winter Weather Advisory is in effect for the following areas:

- Northeastern Brooks Range
- Yukon Valley and Delta
- Baldwin Peninsula
- Selawik Valley
- Eastern Norton Sound
- Nulato Hills
- Lower Koyukuk and Middle Yukon Valleys

For the most current weather Watches / Warnings / Advisories go to: <http://www.weather.gov/arh/>

Avalanche Forecast:

Moderate: Cordova above 2,000 feet, and Haines all elevations.

For the most up to date Avalanche information: <https://alaskasnow.org/>

Air Quality Index (AQI) Advisories

No active advisories/episodes are currently in effect.

<http://dec.alaska.gov/Applications/Air/airtoolsweb/Advis>

State of Alaska Department of Health and Social Services (DHSS)

The Alaska DHSS website is located at <http://dhss.alaska.gov/Pages/default.aspx>

Spills of Oil and Hazardous Substances

The ADEC Spill Prevention and Response page is located at

<http://dec.alaska.gov/spar/ppr/spill-information/response/>

Recent Earthquakes

USGS Earthquake Information: <http://earthquake.usgs.gov/>

National Tsunami Warning Center: <http://ntwc.arh.noaa.gov/>

Travel Advisory

For current driving conditions dial 511 or link to <http://511.alaska.gov/>

Alaska Volcanoes

Cleveland Alert Level: Advisory and Aviation Color Code: Yellow

Veniaminof Alert Level: Advisory and Aviation Color Code: Yellow

For Alaska Volcano updates, go to: <https://www.avo.alaska.edu/>

Alaska Cyber Security Information

State Employees may sign up for cyber security notifications and alerts at

<https://oit.alaska.gov/Security>

The Next Situation Report: will be **06** March 2019 at 8:00 am. A significant change in the situation or the threat level will prompt an interim report.

This report is posted on the internet at <https://ready.alaska.gov/sitrep>. To register for email distribution, go to <http://list.state.ak.us/mailman/listinfo/dhsem.situation.report>. Direct questions regarding this report to the SEOC at 907-428-7100 or seoc@alaska.gov.